

DATA VISUALIZATION

THEME PARKS

GROUP 12

MARÍA COBO MUÑOZ
JORGE DAVO SAINZ
JORIS KÖSTER
FRAN KARLOVIĆ
ANICA KRÜGER
SUSANNE FUENTES BONGENAAR

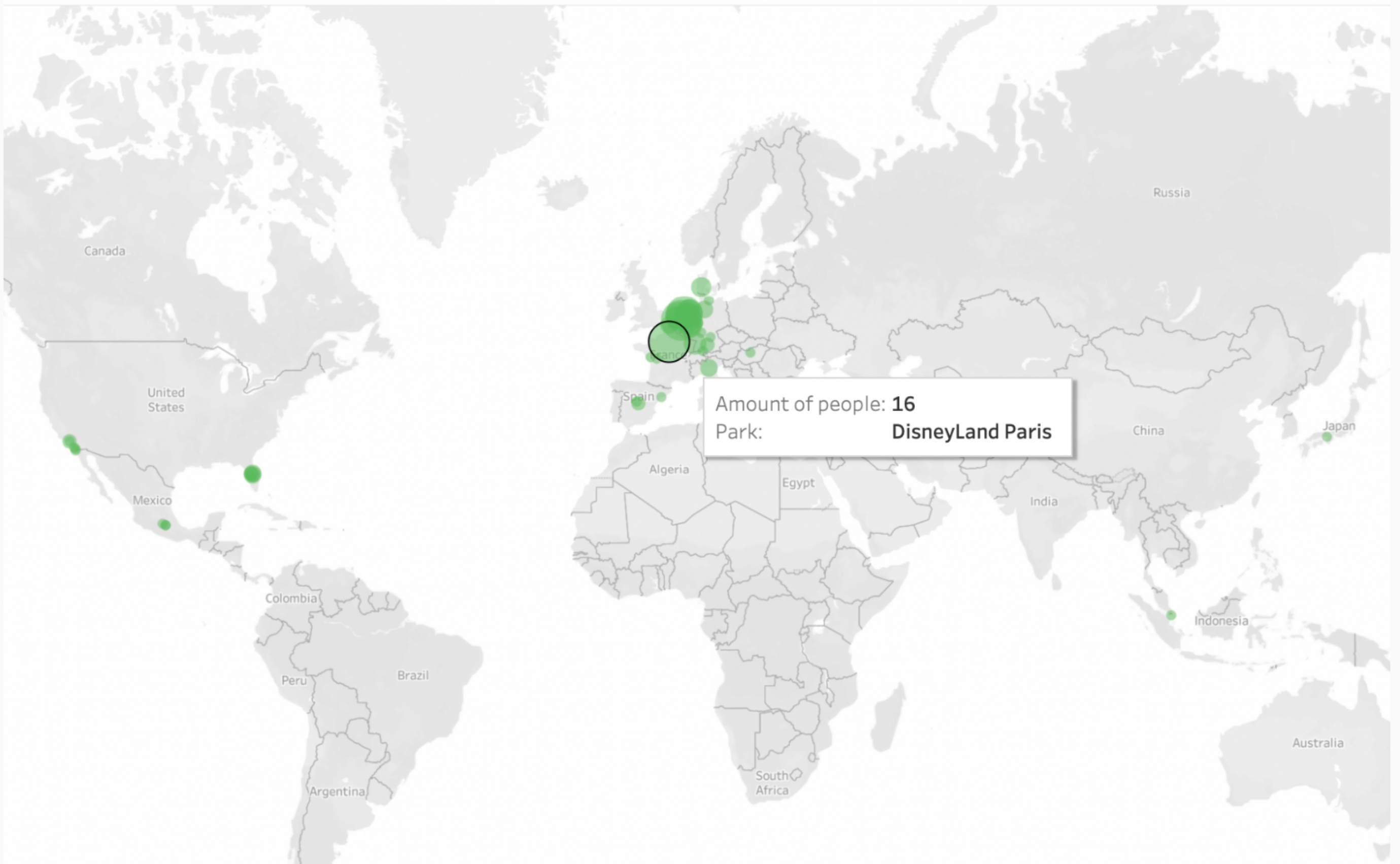


VISUALIZATIONS

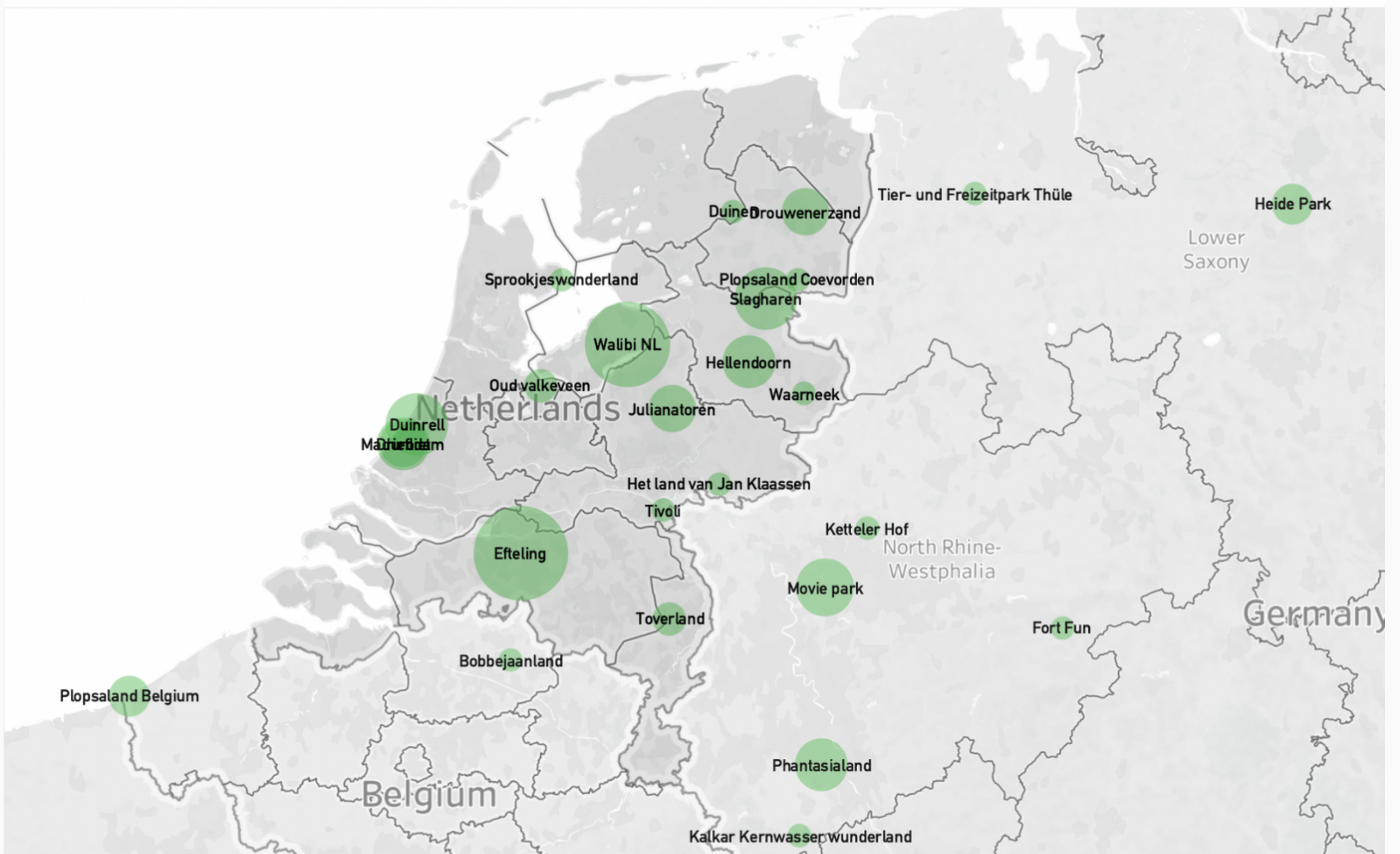
DEMOGRAPHICS (MARIA)

ACADEMIC VISUALIZATIONS:

What theme parks do CreaTers visit



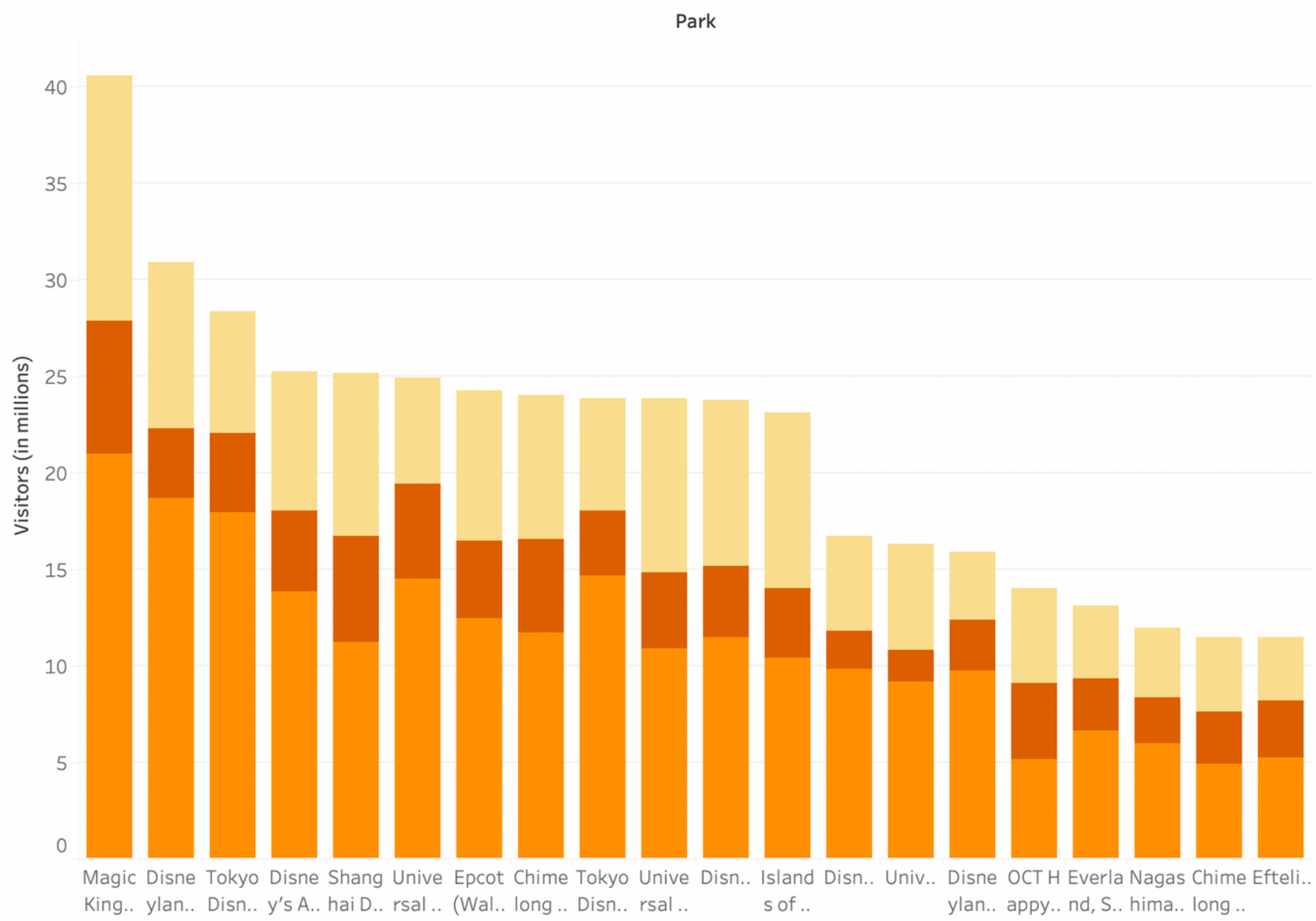
What theme parks do CreaTers visit



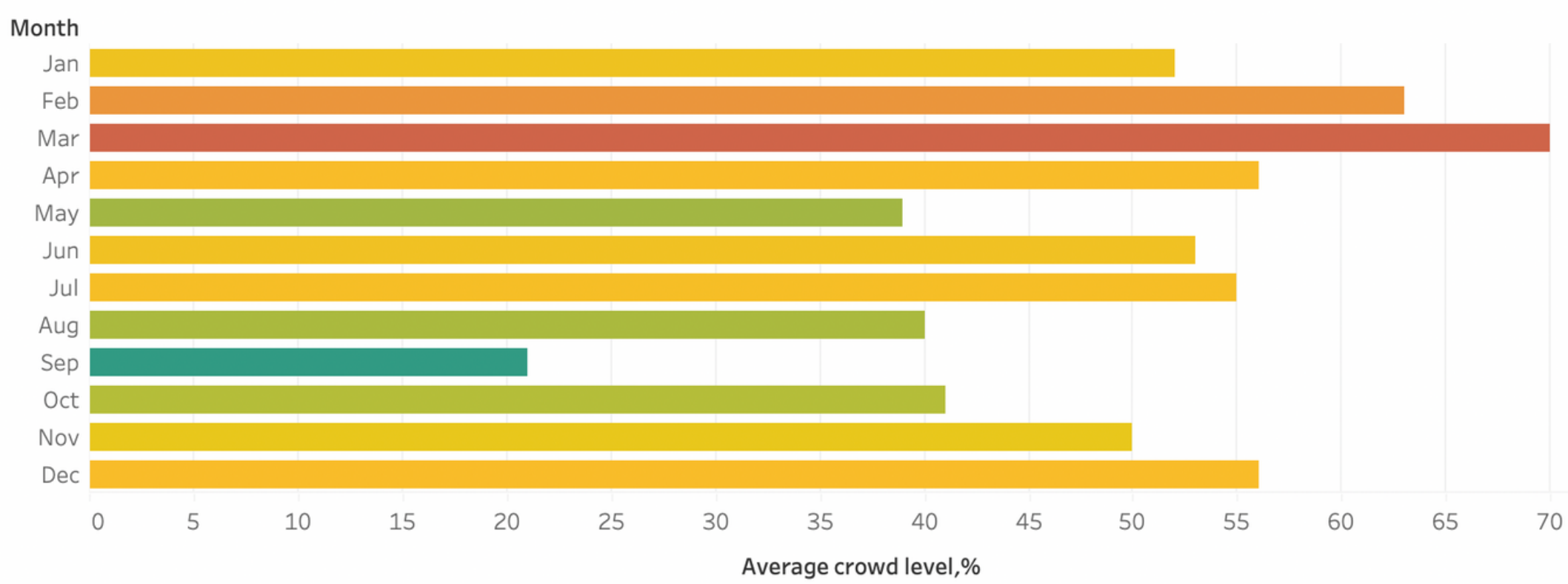
DEMOGRAPHICS (MARIA)

ACADEMIC VISUALIZATIONS:

Top 20 theme parks worldwide from 2019 to 2021, by attendance



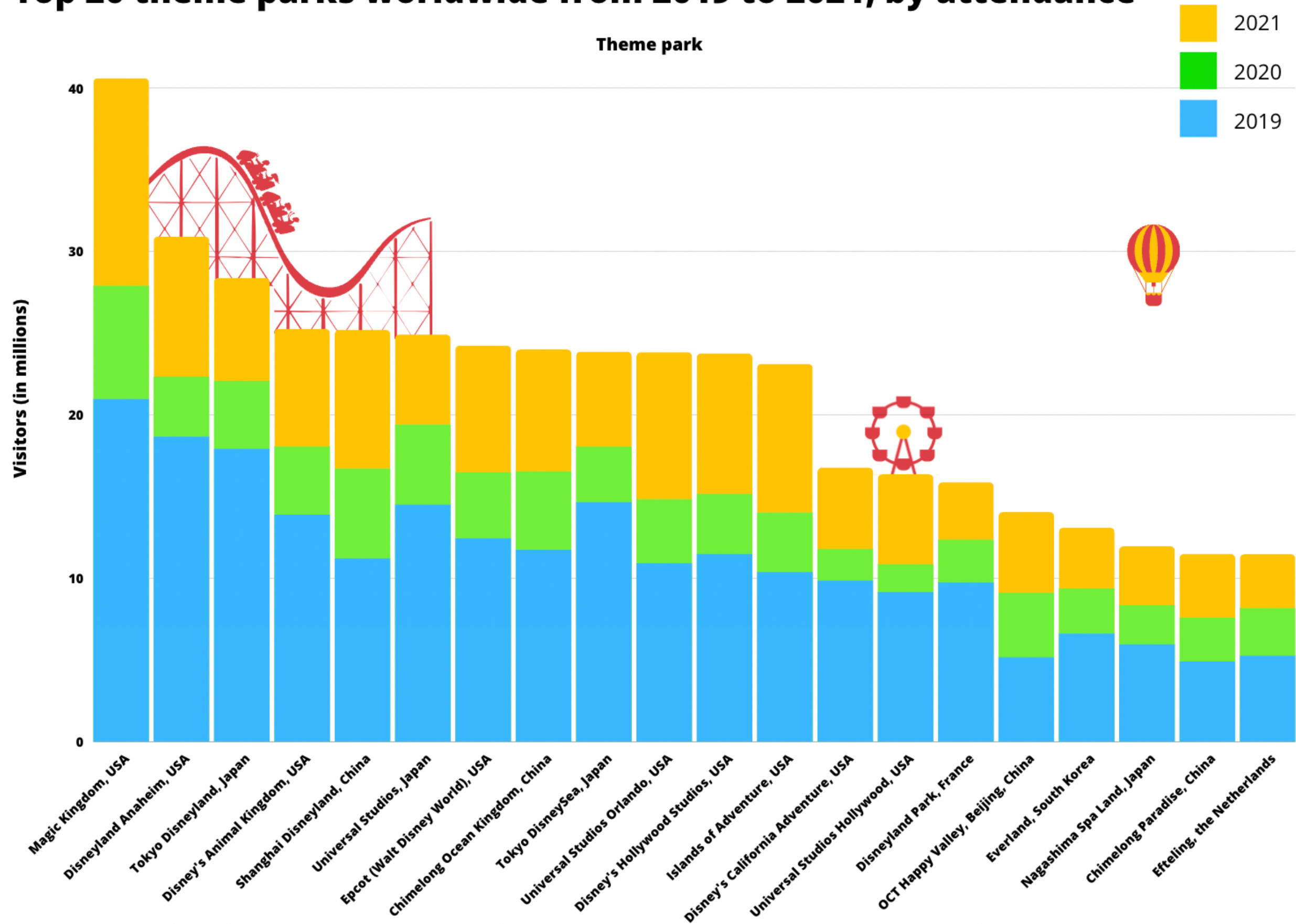
Magic Kingdom's crowd calendar (all time)



DEMOGRAPHICS (MARIA)

FUN VISUALIZATIONS:

Top 20 theme parks worldwide from 2019 to 2021, by attendance



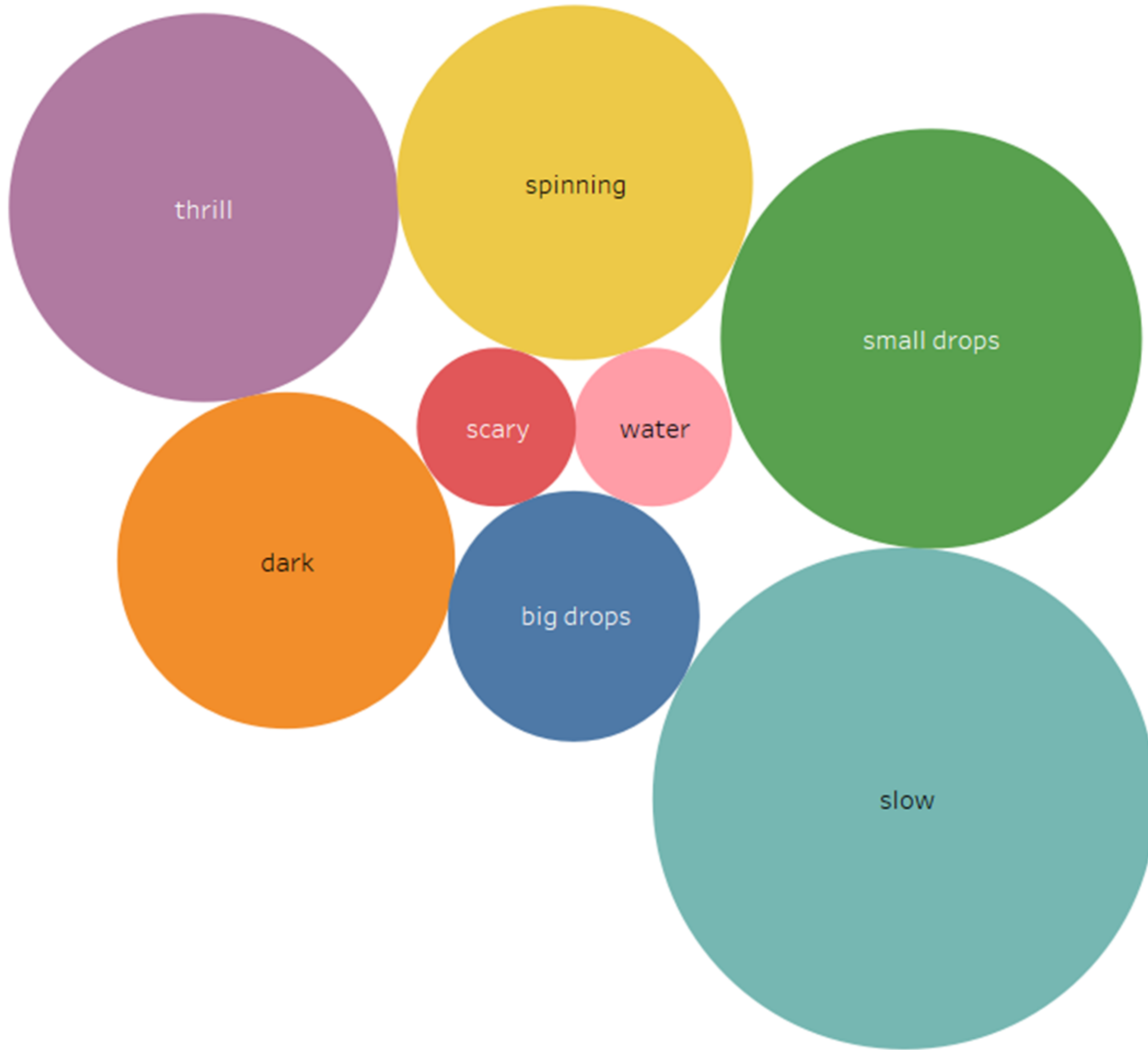
Magic Kingdom's crowd calendar (all time)



MAGIC KINGDOM (JORGE)

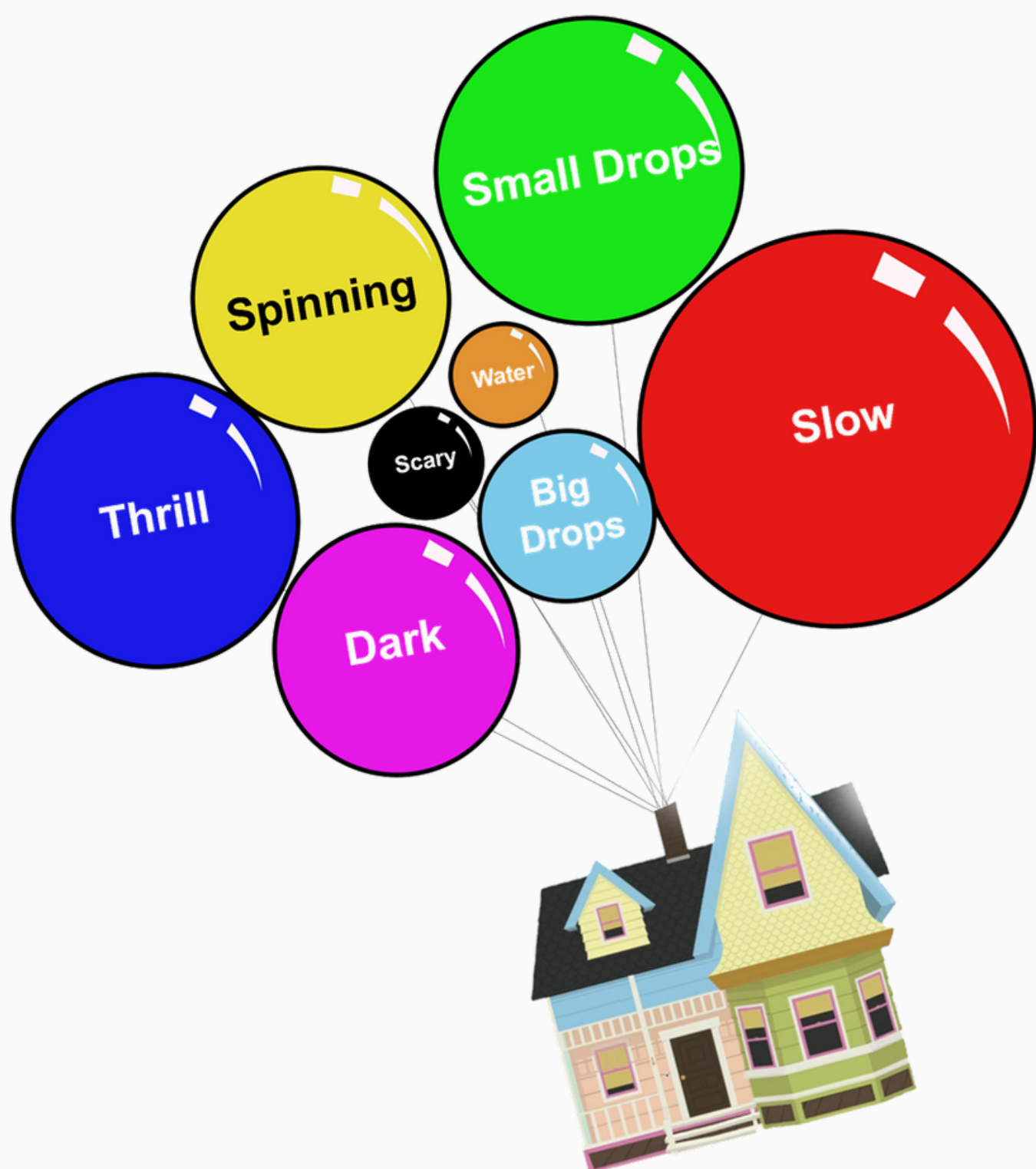
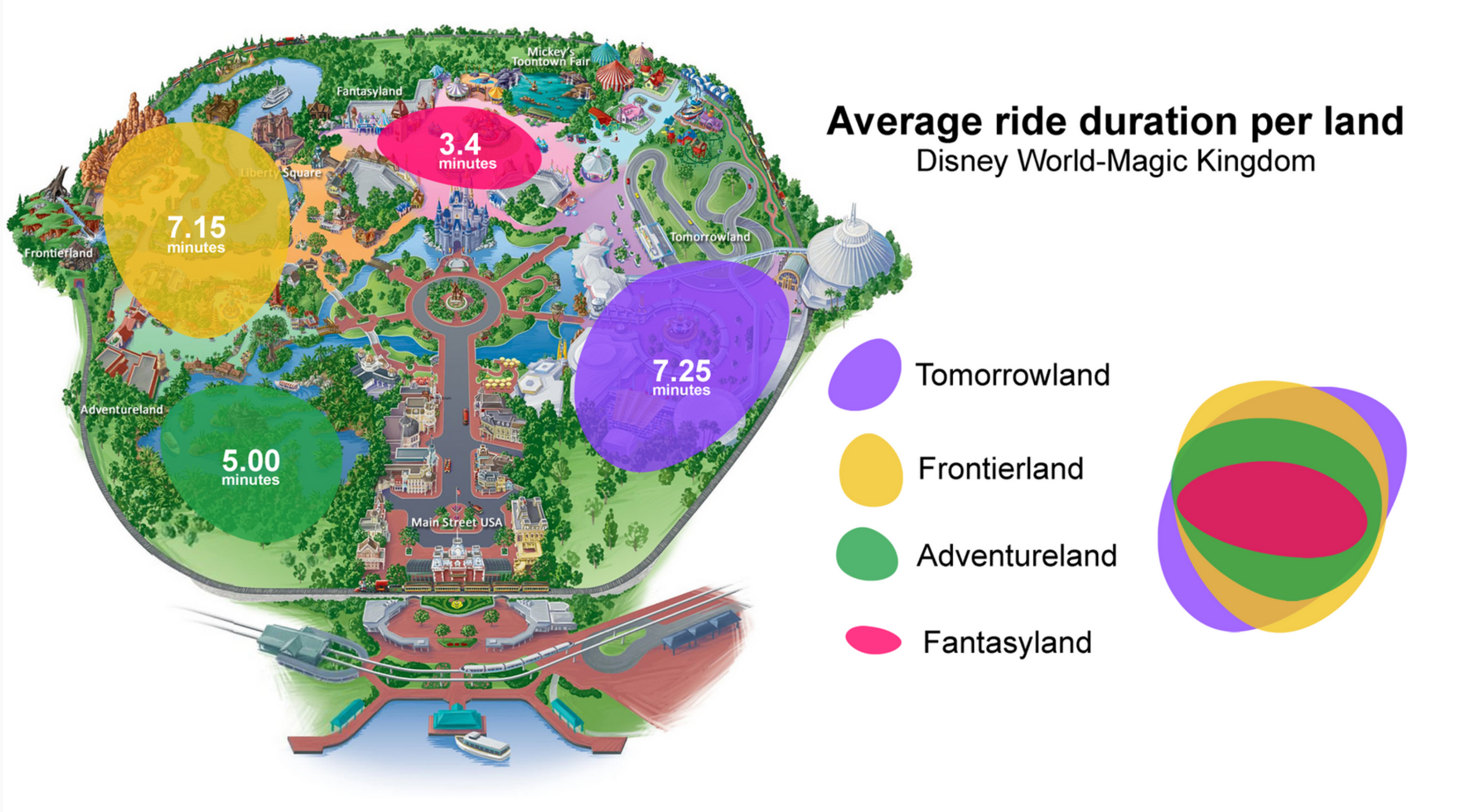
ACADEMIC VISUALIZATIONS:

Trend In theme park attractions DisneyWorld

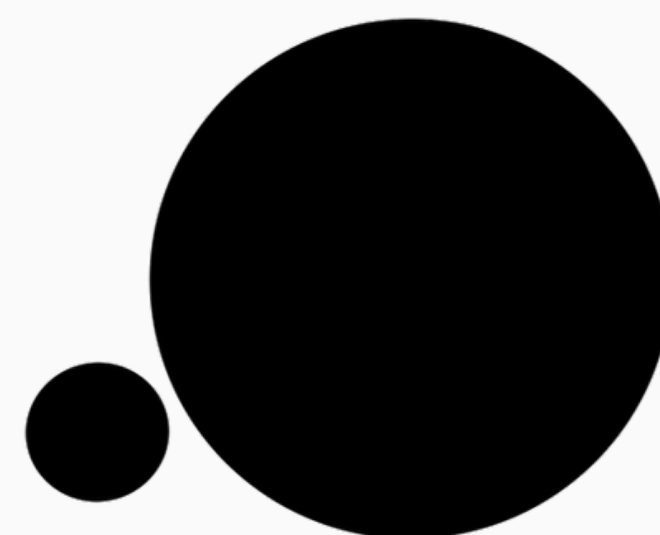


MAGIC KINGDOM (JORGE)

FUN VISUALIZATIONS:



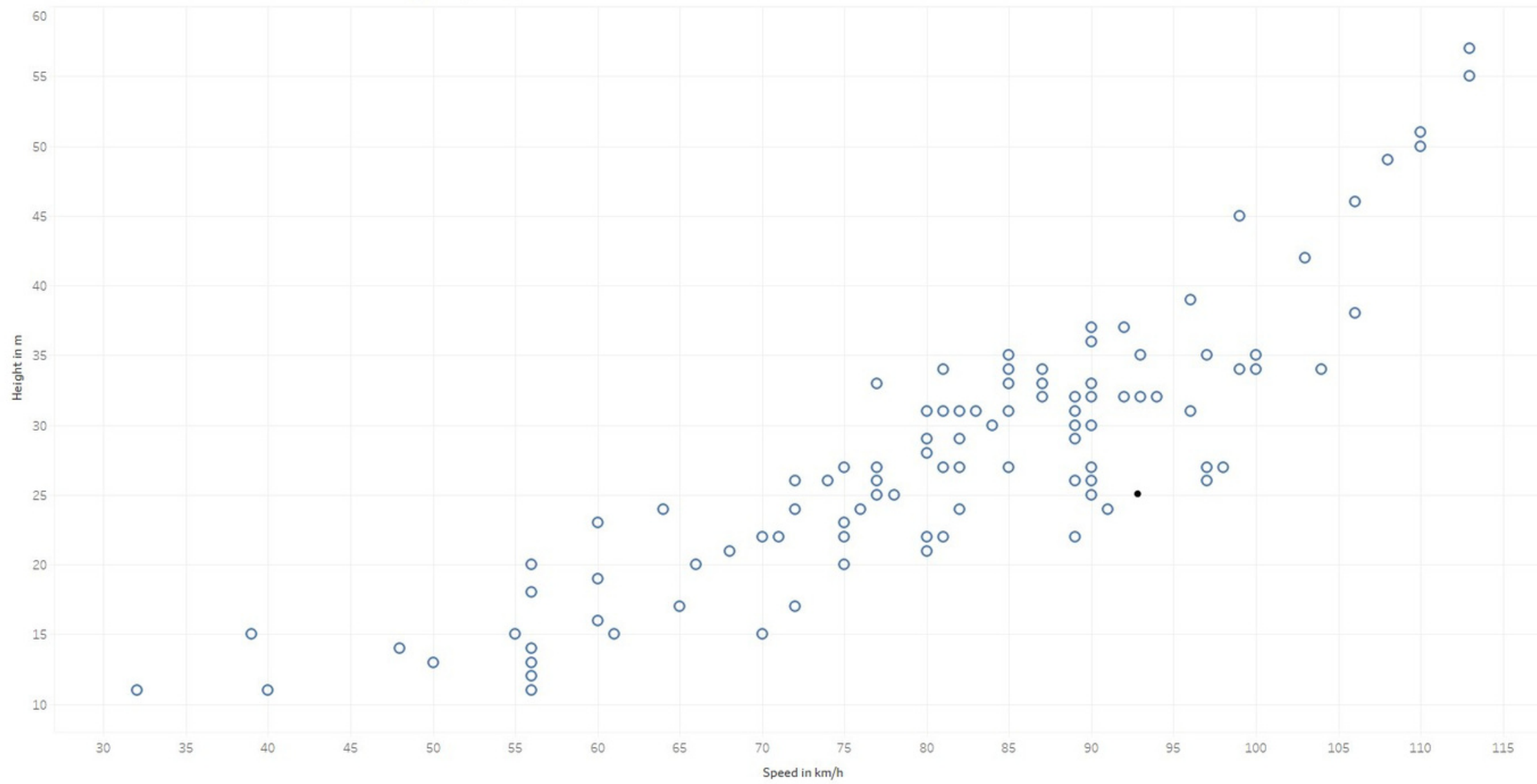
Area equals amount of appearances in the resort



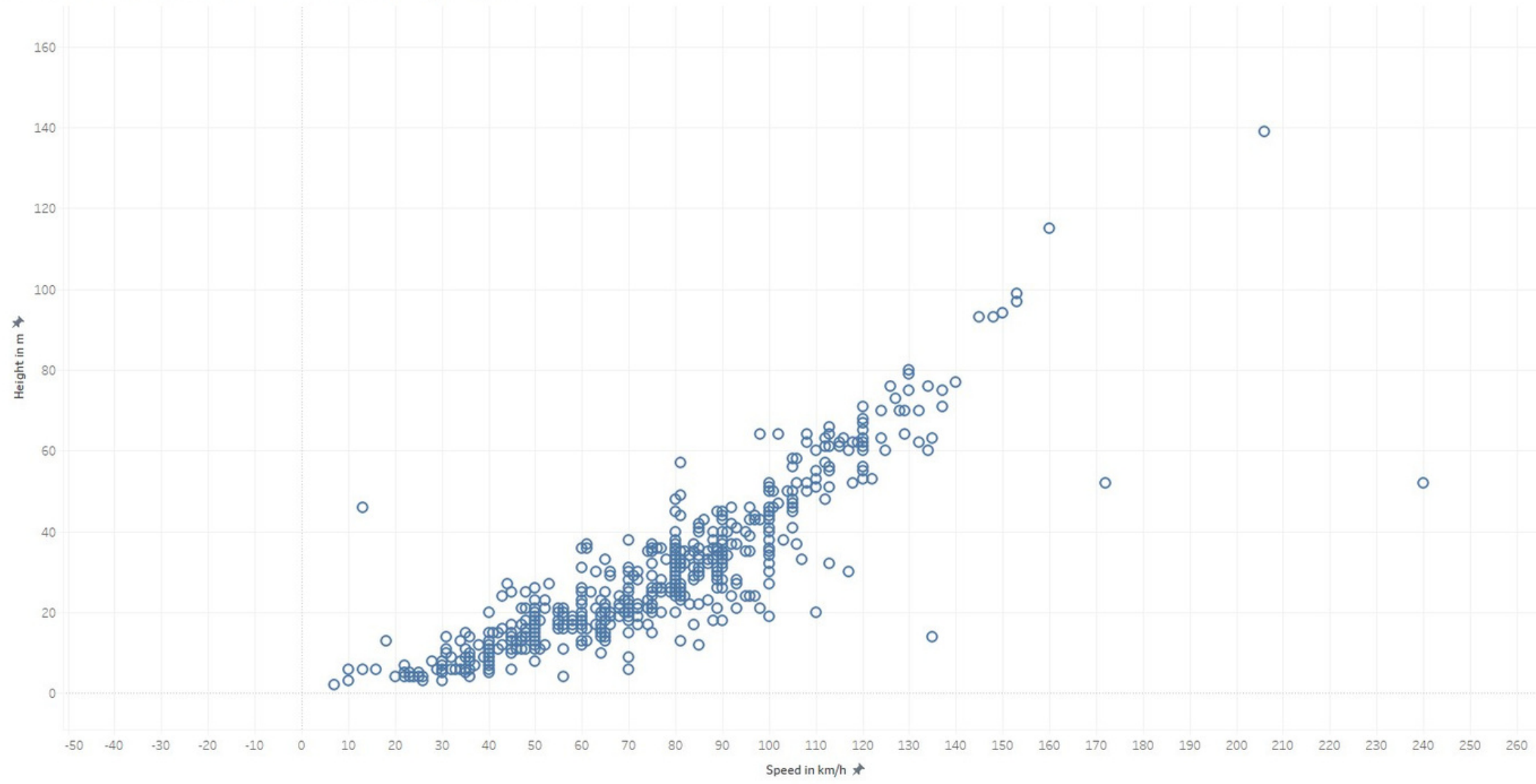
ROLLERCOASTERS (JORIS)

ACADEMIC VISUALIZATIONS:

Wooden Roller Coasters around the world Speed/Height

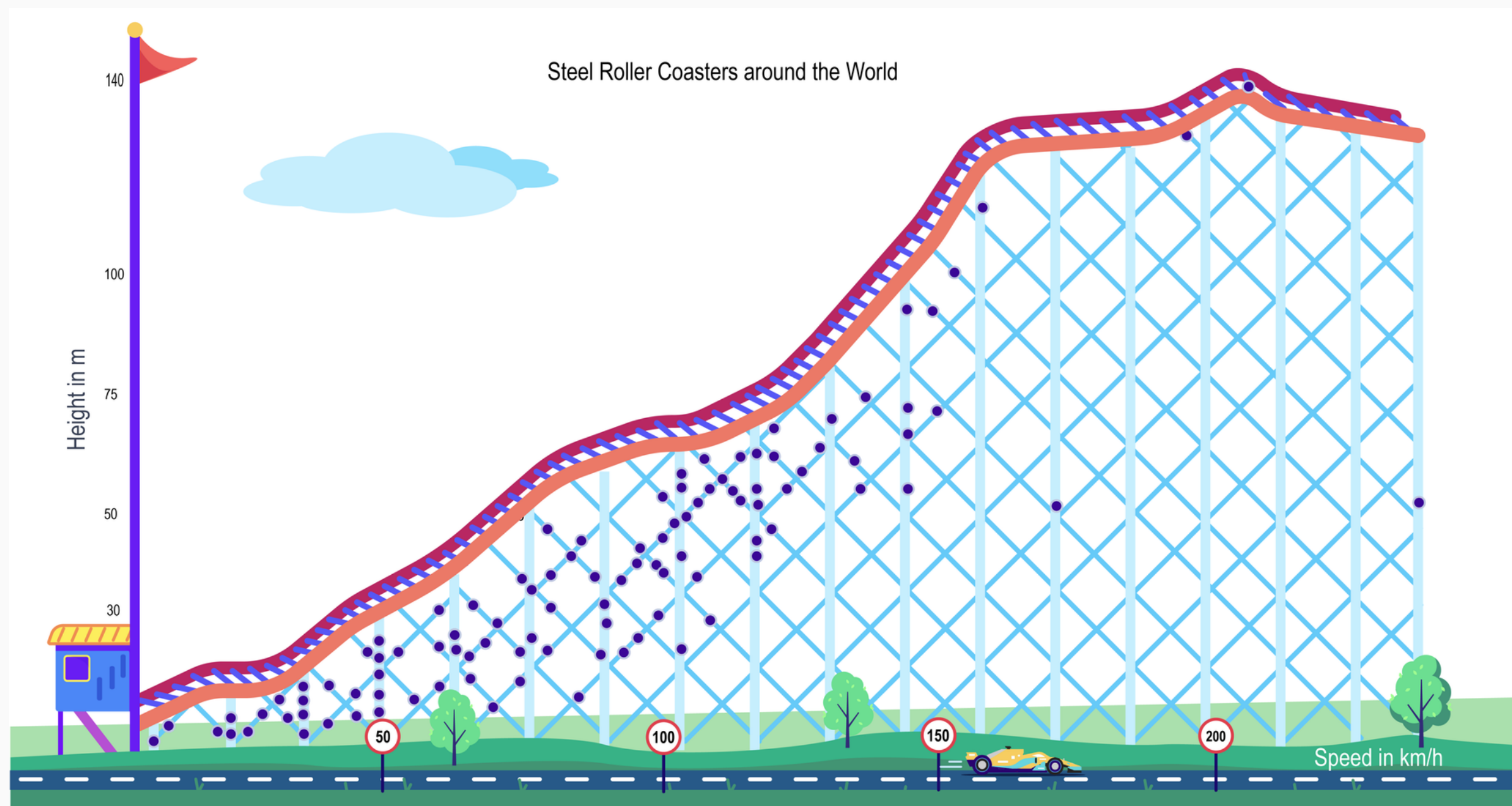


Steel Roller Coasters around the world Speed/Height



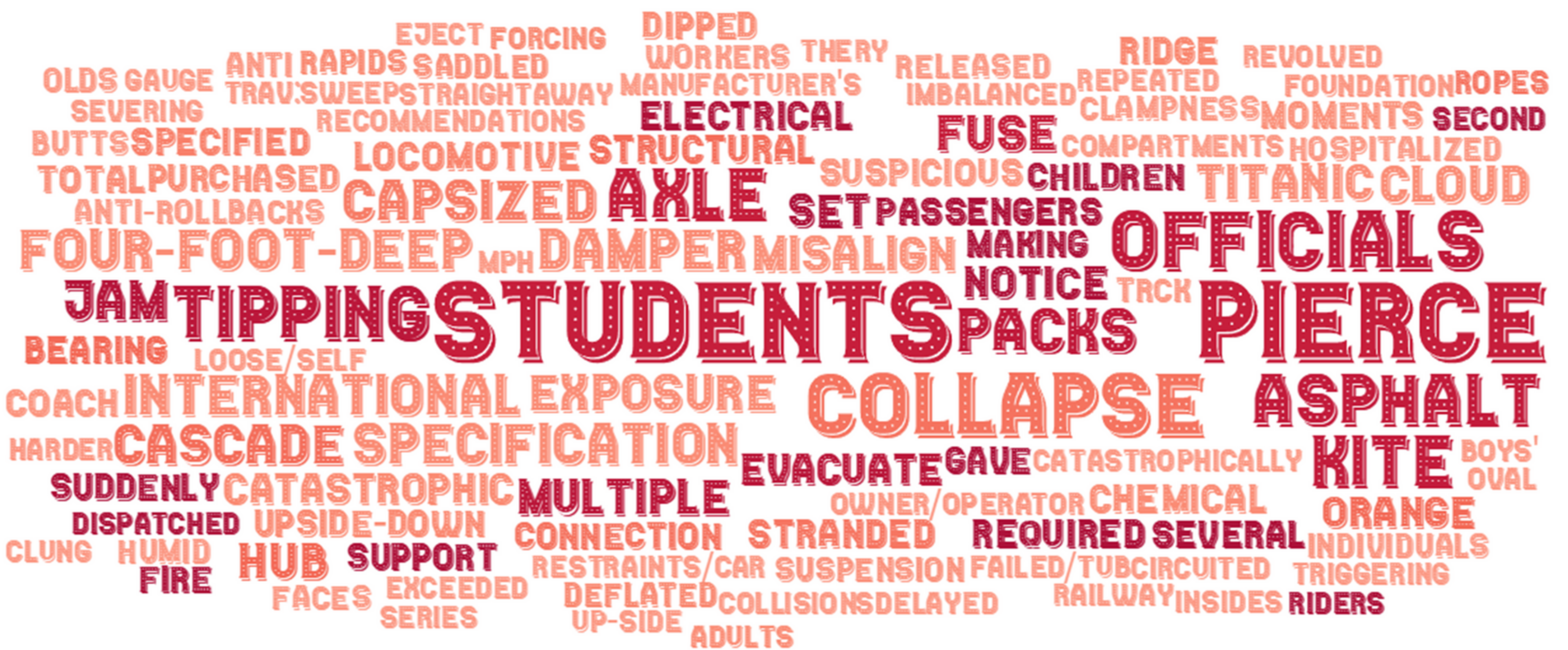
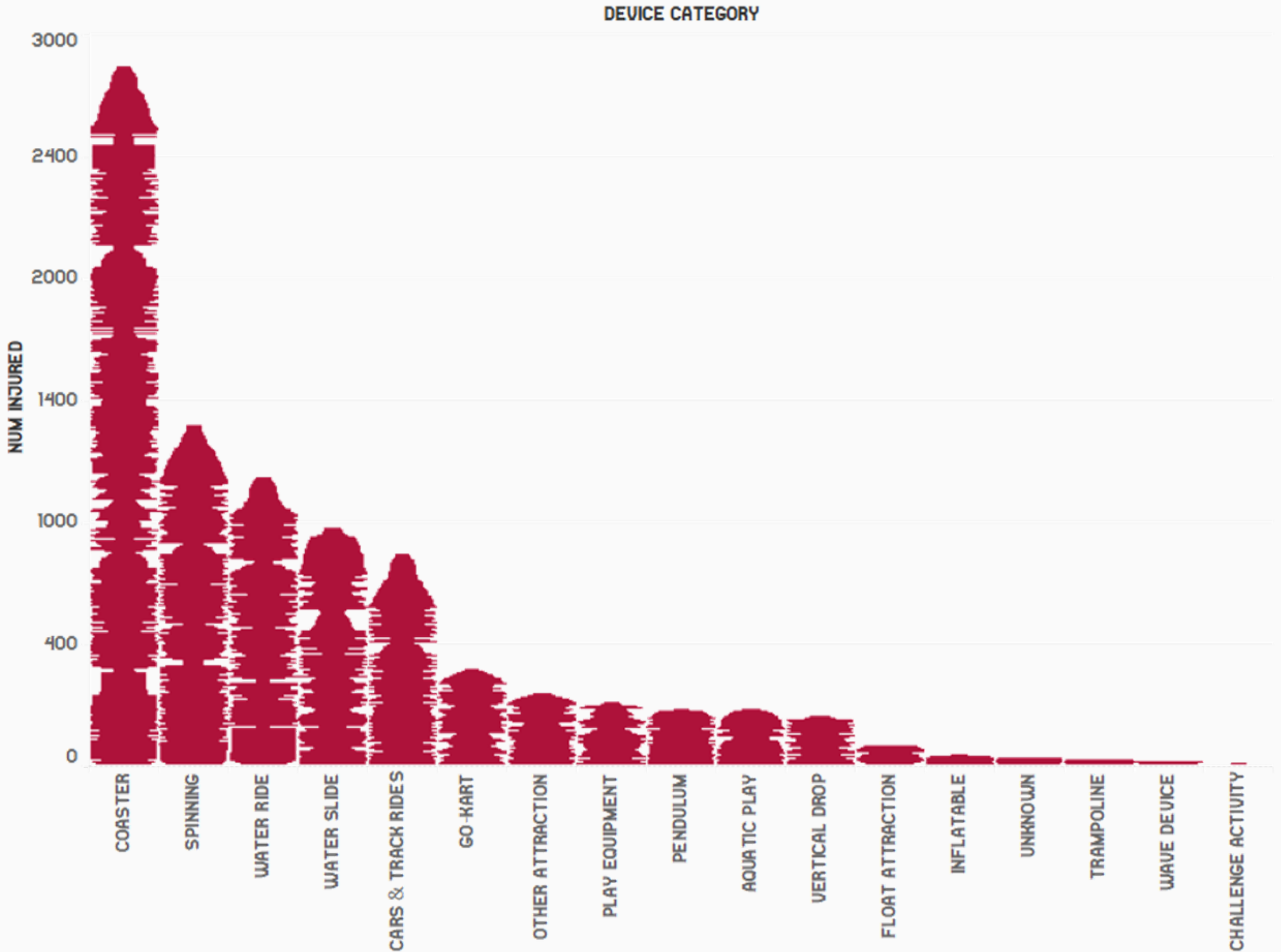
ROLLERCOASTERS (JORIS)

FUN VISUALIZATIONS:



INJURIES (FRAN)

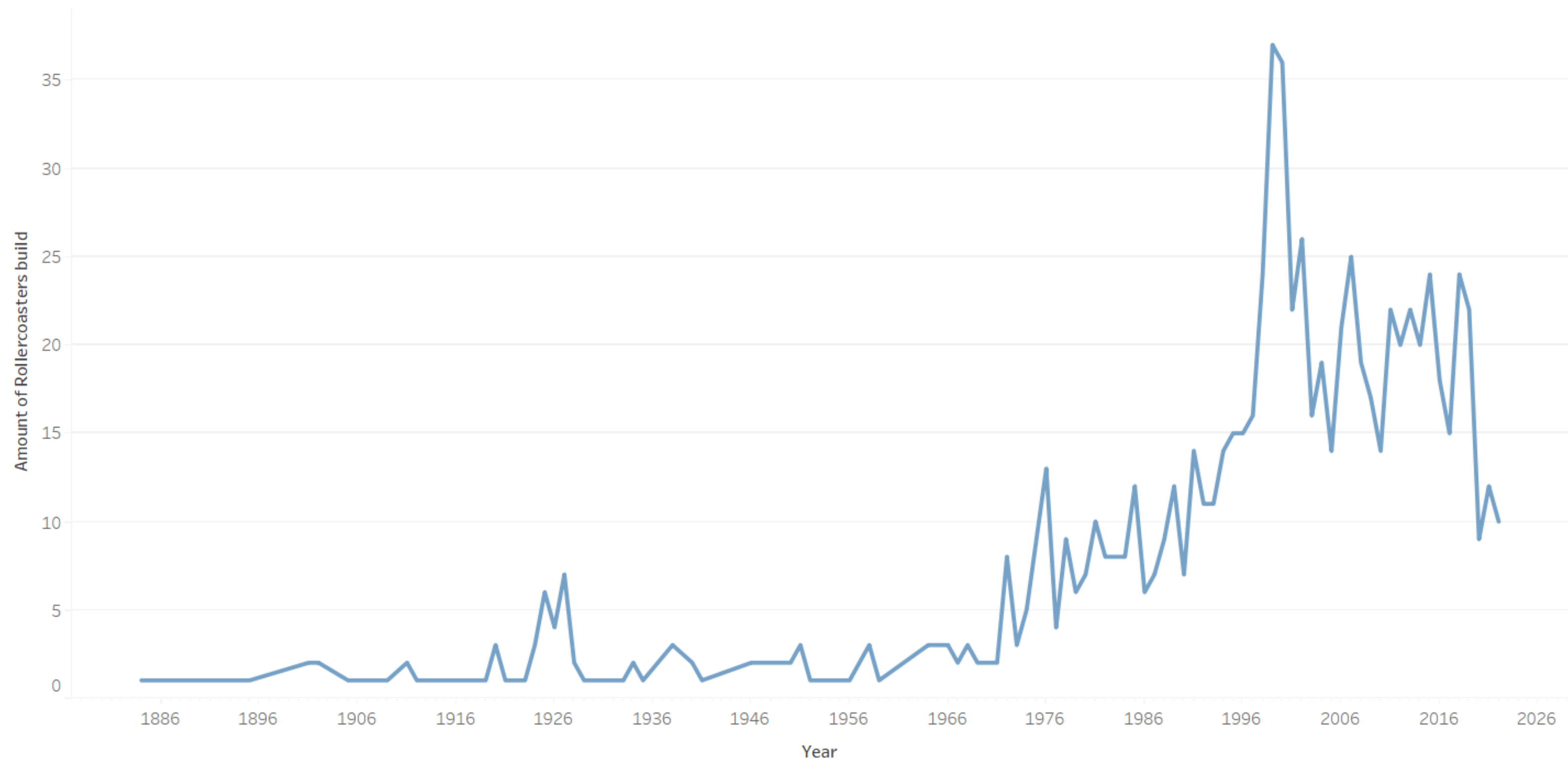
ACADEMIC VISUALIZATIONS:



HISTORY (ANICA)

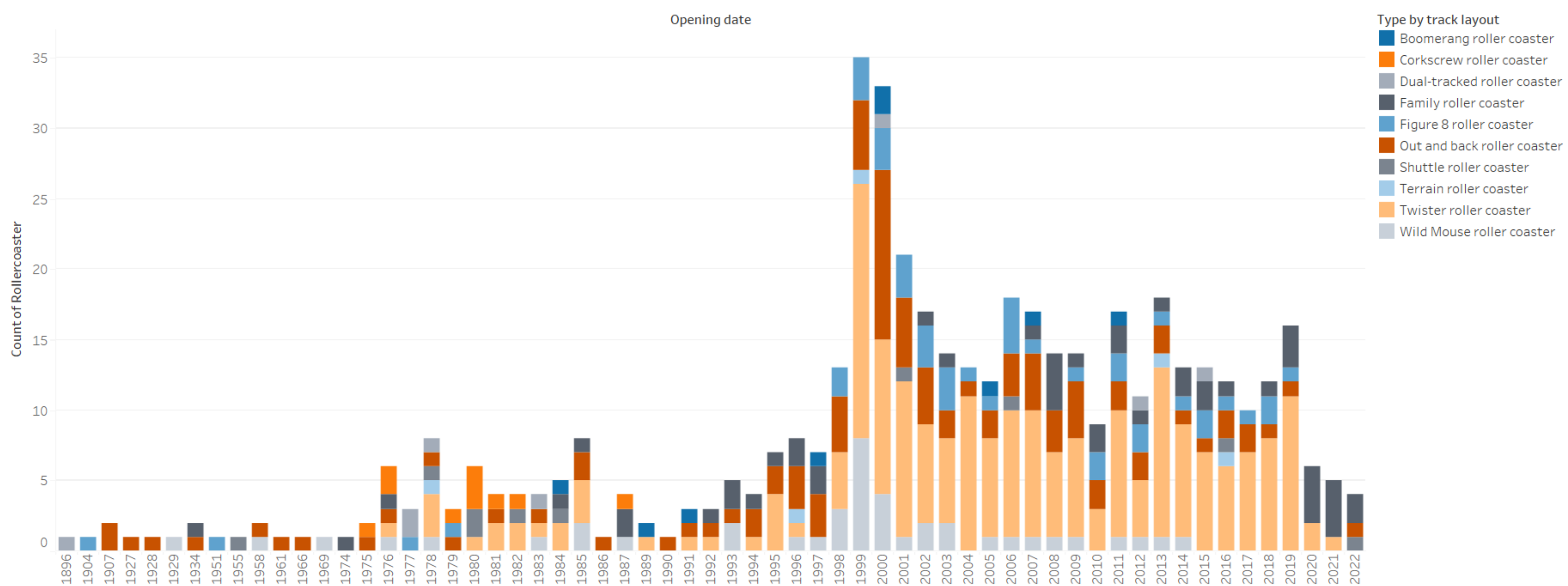
ACADEMIC VISUALIZATIONS:

Amount of Rollercoasters build per year from 1884 until 2022



The trend of count of Rollercoaster for Year Year. The view is filtered on Year Year, which keeps non-Null values only.

Track Layouts of rollercoasters over the years

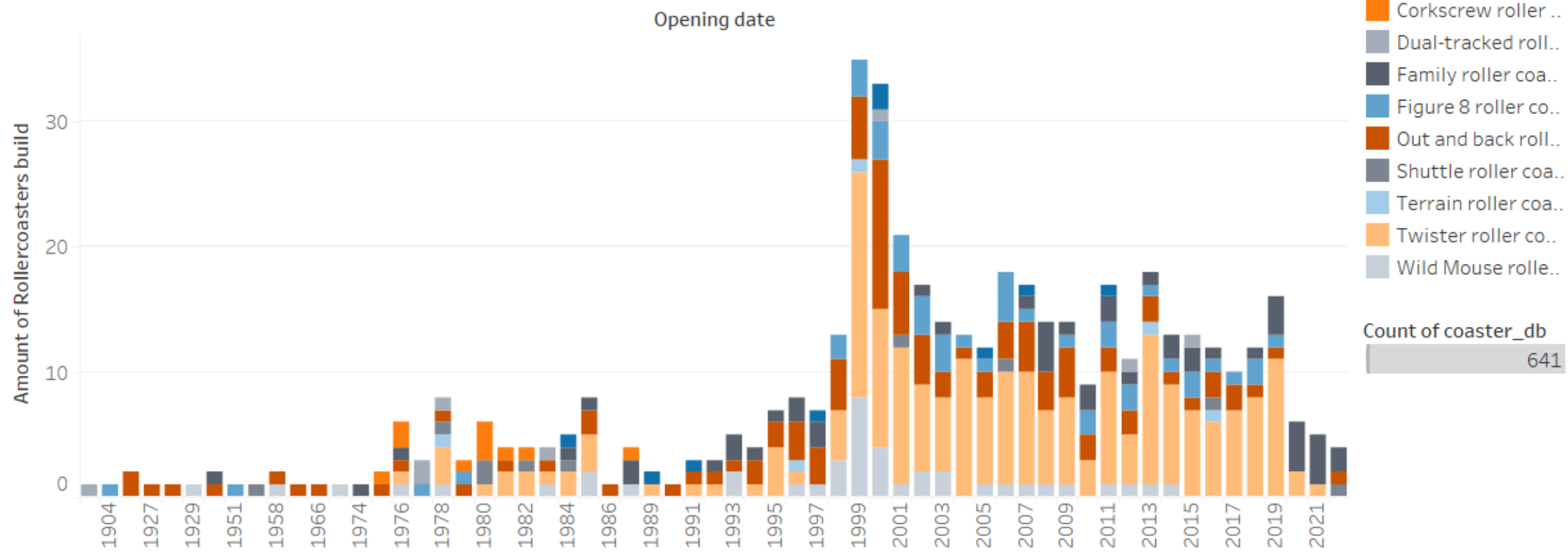


Count of coaster_db for each Opening date Year. Colour shows details about Type by track layout. The view is filtered on Type by track layout and Opening date Year. The Type by track layout filter keeps 10 of 60 members. The Opening date Year filter excludes Null.

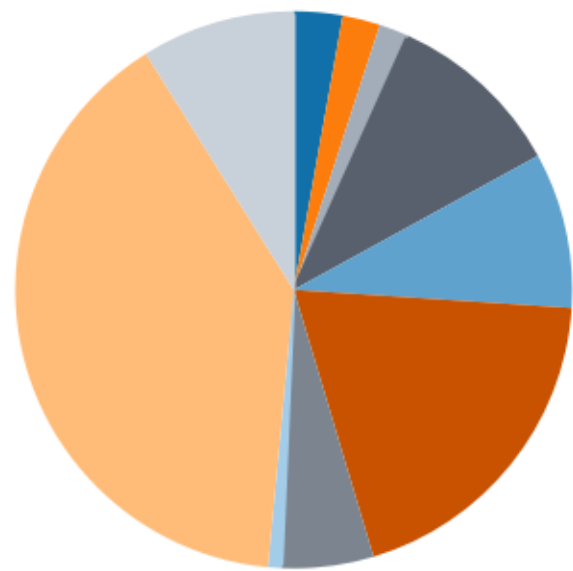
HISTORY (ANICA)

DASHBAORD:

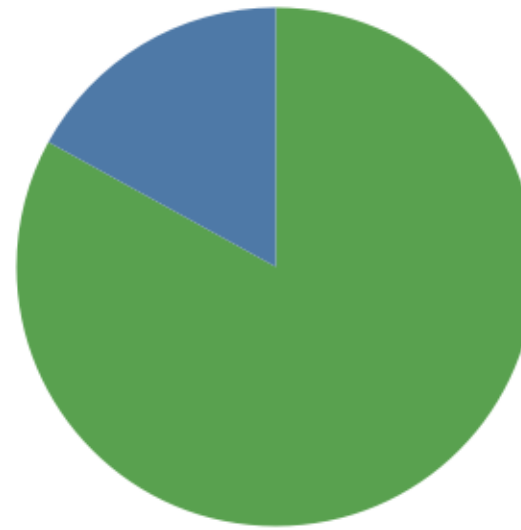
Track Layouts of rollercoasters over the years



Type of Track Layout



Material of rollercoaster

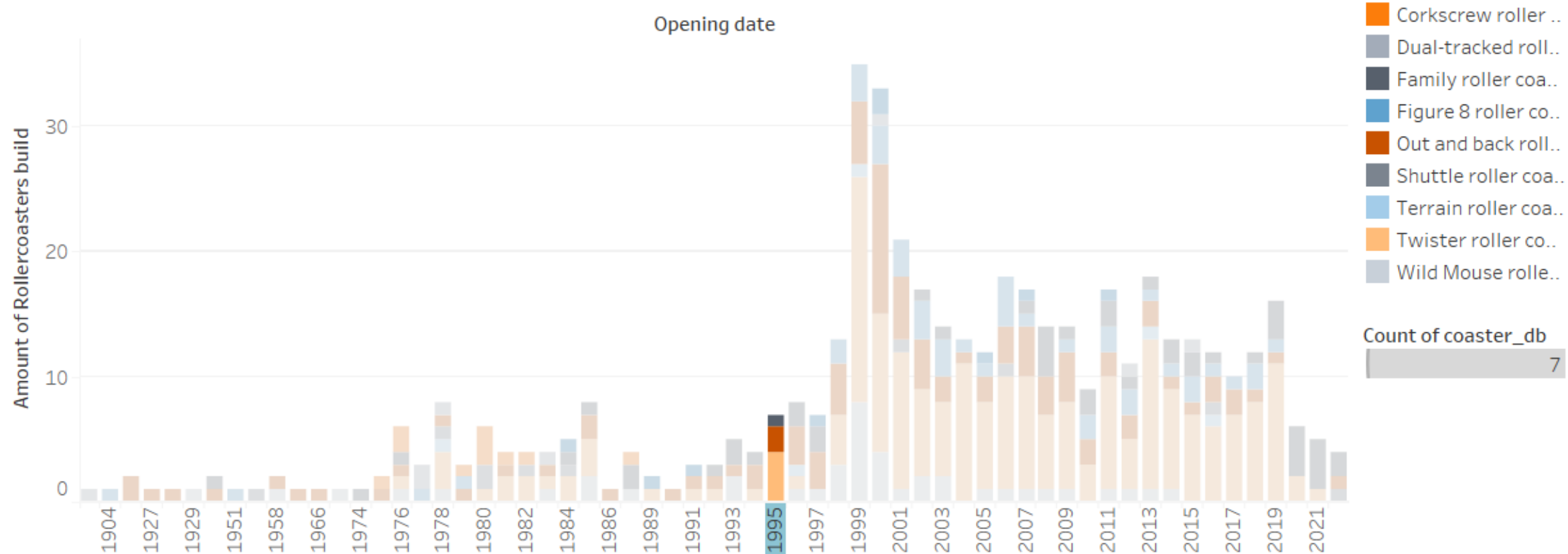


Type of track layout and which material was used

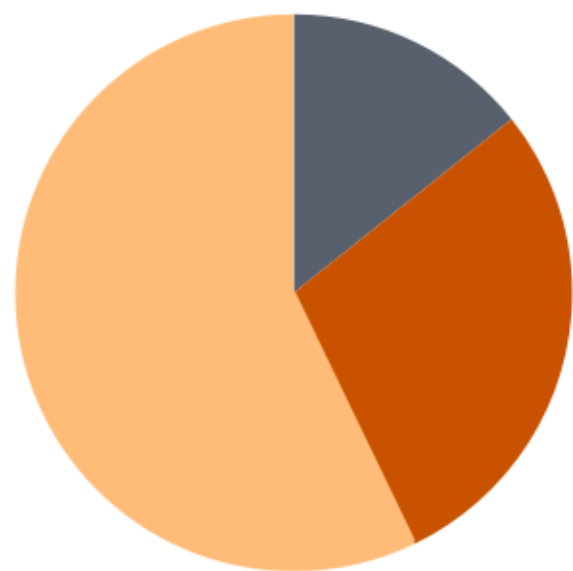
Type by track l..	Material	
	Steel	Wood
Boomerang roll..	17	1
Corkscrew roll..	14	
Dual-tracked ro..	8	3
Family roller co..	65	1
Figure 8 roller ..	55	3
Out and back r..	52	72
Shuttle roller c..	33	1
Terrain roller c..	1	4
Twister roller c..	233	21
Wild Mouse rol..	54	3

Year in stacked bar chart can be selected and pie charts and table change accordingly

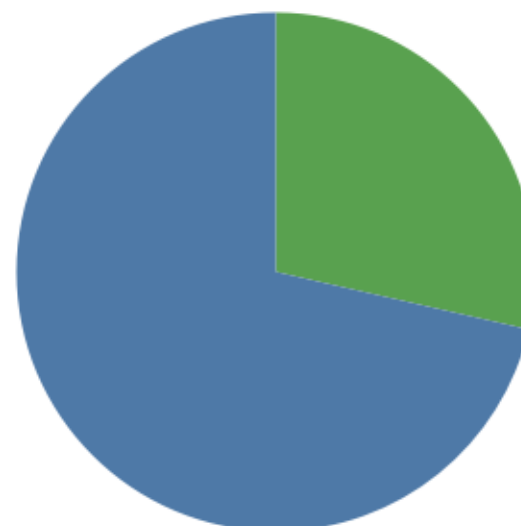
Track Layouts of rollercoasters over the years



Type of Track Layout



Material of rollercoaster

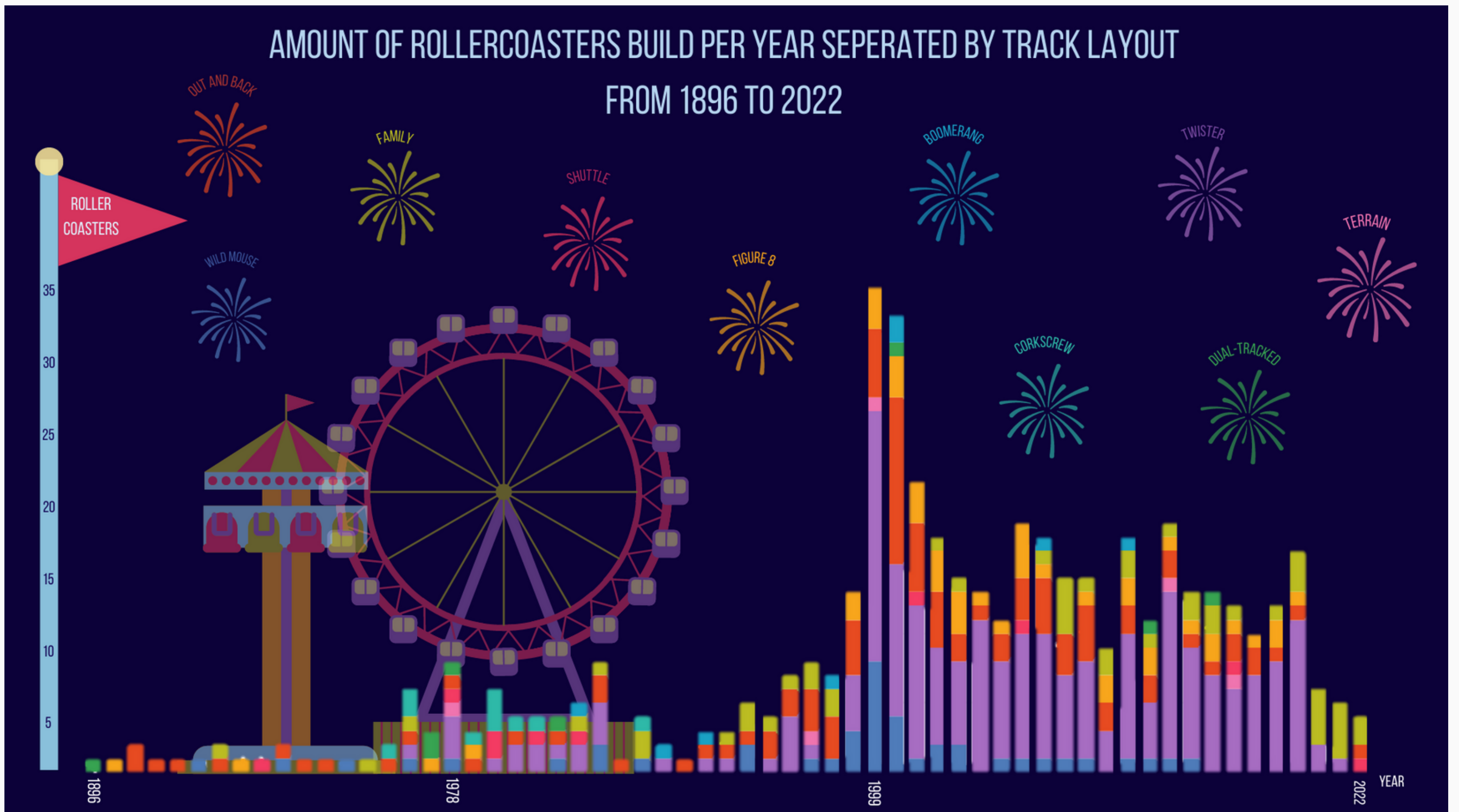


Type of track layout and which material was used

Type by track l..	Material	
	Steel	Wood
Family roller co..	1	
Out and back r..		2
Twister roller c..	1	3

HISTORY (ANICA)

FUN VISUALIZATIONS:



ECONOMICS (SUSANNE)

ACADEMIC VISUALIZATIONS:



Sort By
Revenue 2022

Order By
Desc

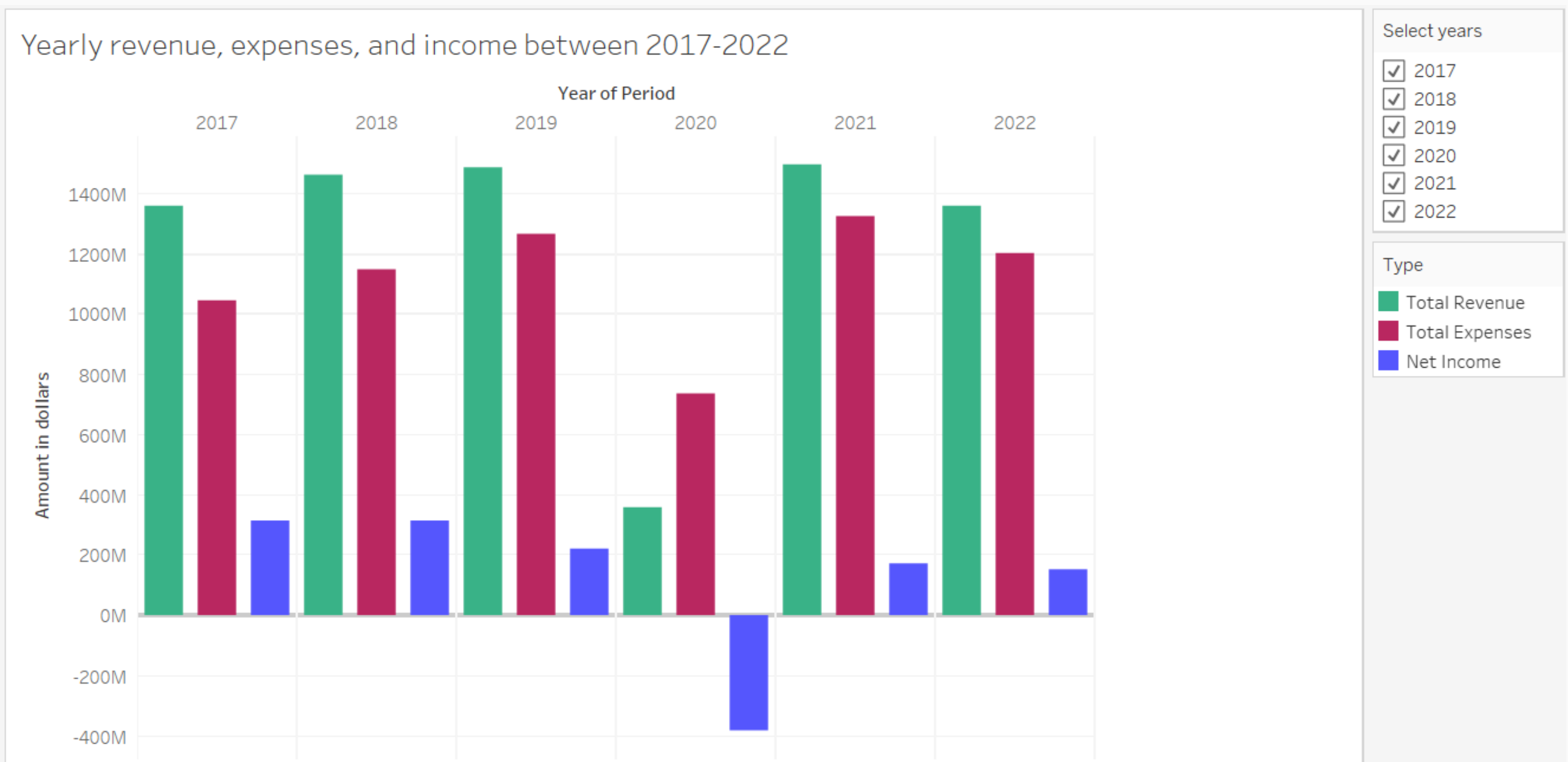
Start Year
2020

Select End Year
2022

Legend:
■ End Year
■ Start Year

Caption

This visualization shows the 2022 revenue (green) of the leading theme park brands, their name (gray), and the number of parks they have (red). Next to that the difference of income over time is shown with a line/dot graph. A Start Year (blue) and End Year (yellow) can be selected, right now 2020 and 2022 are selected. The view can be sorted by Revenue 2022, Revenue 2020, Name, and Number of Parks, and the order can be selected (ascending or descending).



Select years

- 2017
- 2018
- 2019
- 2020
- 2021
- 2022

Type

- Total Revenue
- Total Expenses
- Net Income

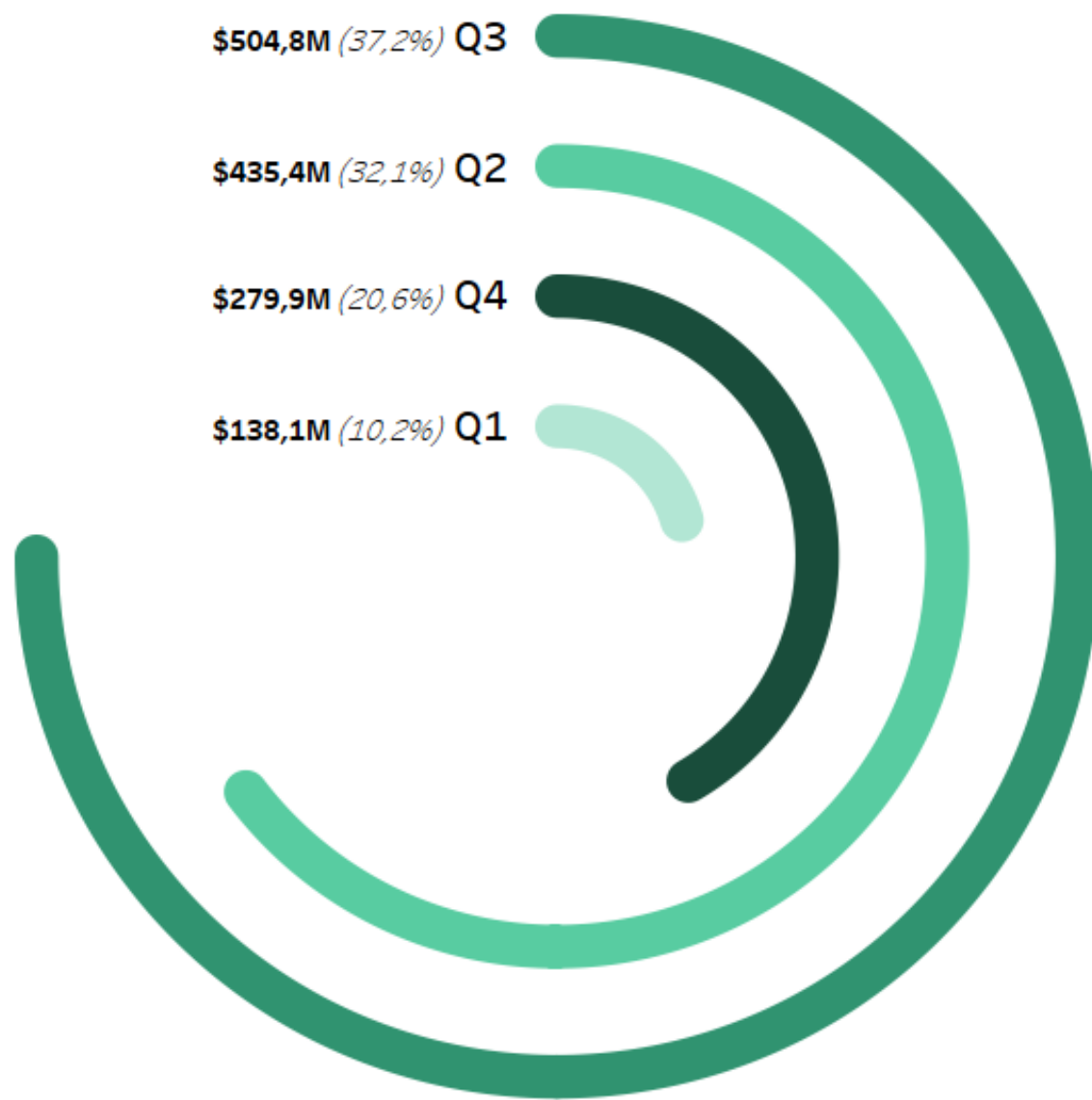
Caption

This visualization shows the total revenue, expenses, and income of the Six Flags theme park brand per year. The color of the bars represent the different categories, and the height of the bars show the amount in dollars. The view can be filtered by year. In this view all years are selected.

ECONOMICS (SUSANNE)

ACADEMIC VISUALIZATIONS:

Quarterly Revenue and relative contribution to Total Revenue per year



Year

- 2017
- 2018
- 2019
- 2020
- 2021
- 2022

Quarter

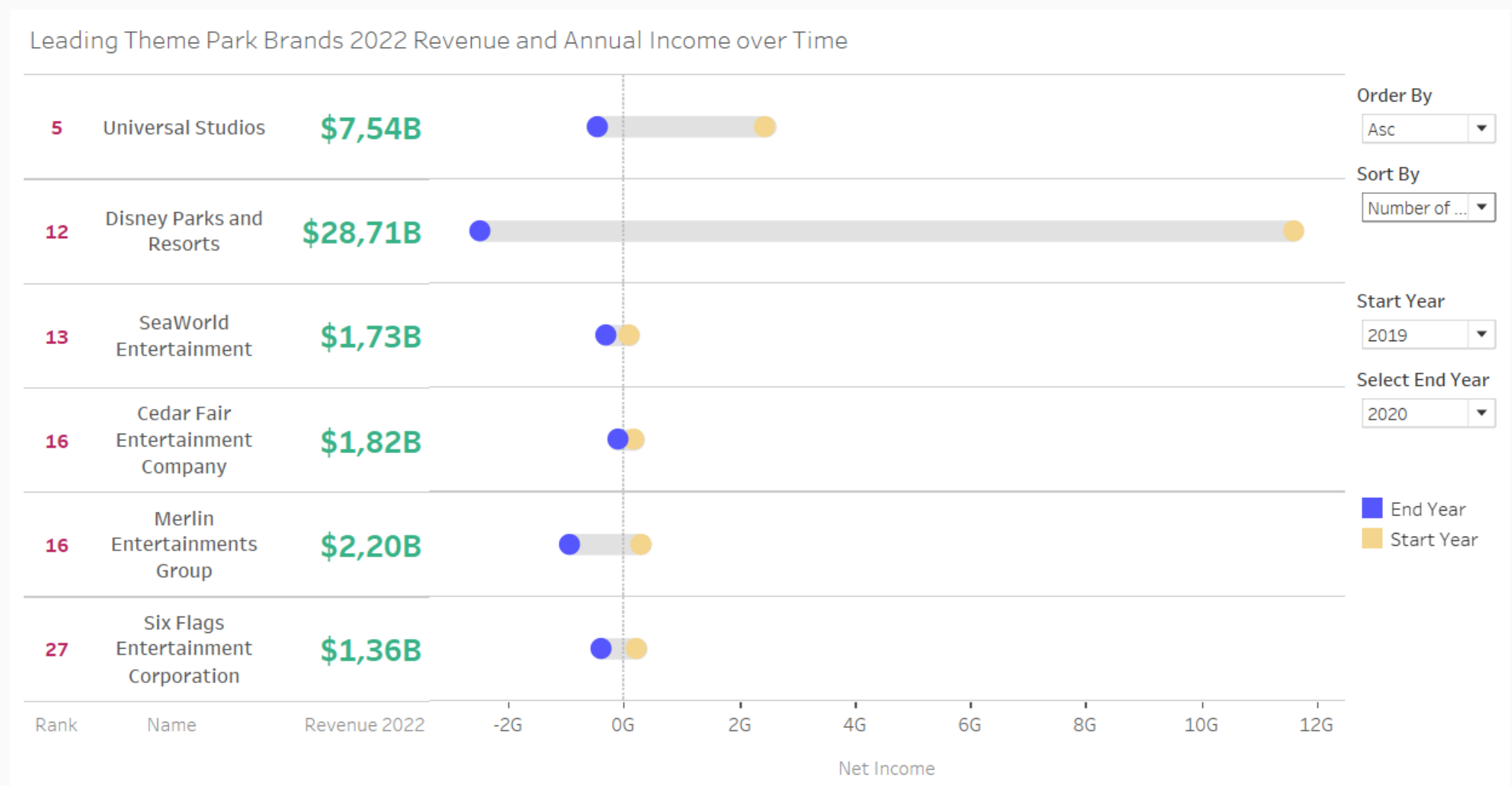
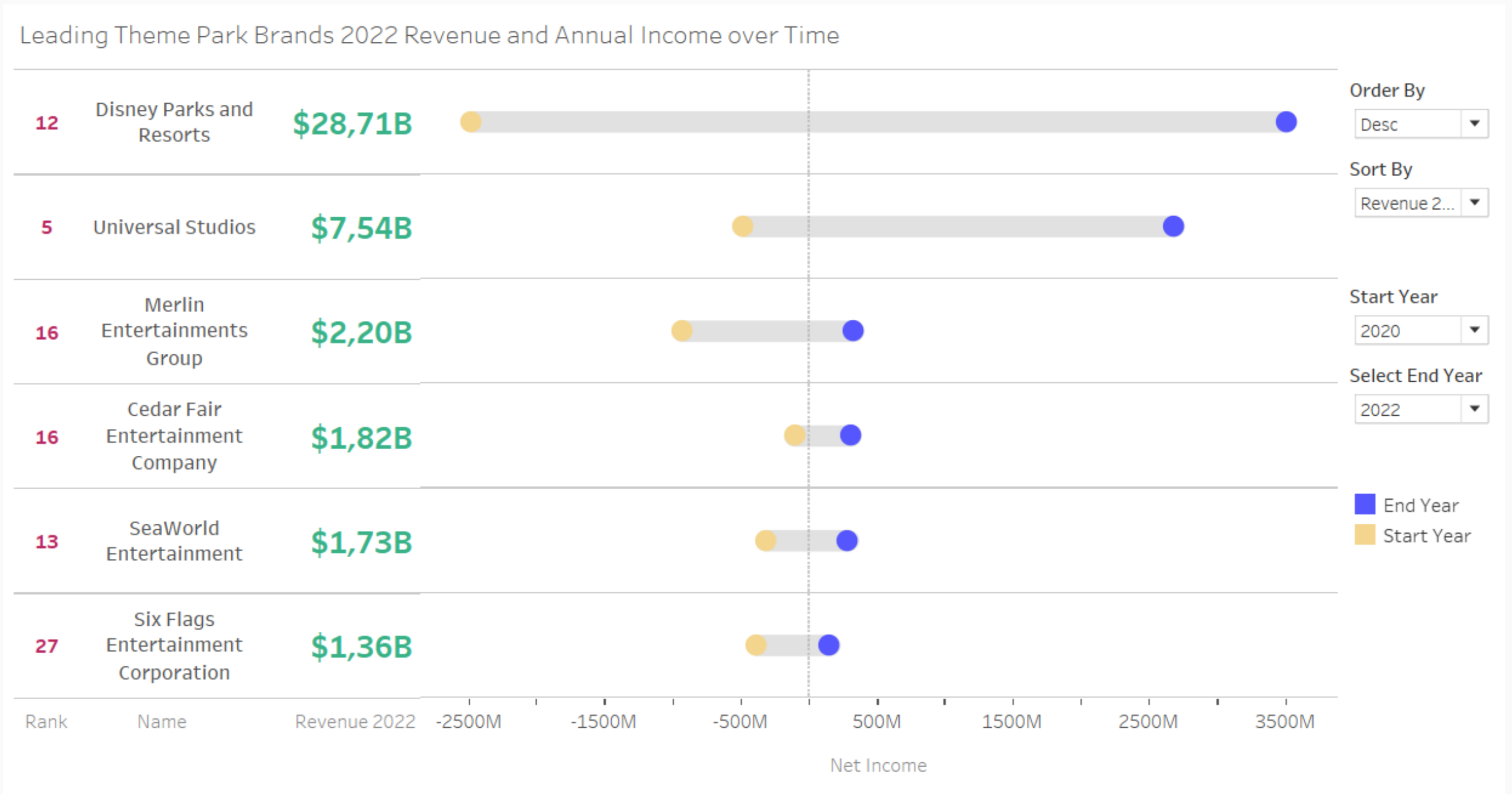
- Q1
- Q2
- Q3
- Q4

Caption

The colored bars show the relative amount of revenue per quarter compared to the total revenue in a specific year. The Color represents the quarter, and the length of the bar represents the relative contribution compared to the other quarters. shows the Quarter. The labels show detailed information about the amount of revenue, the relative contribution to the total revenue, and the quarter. The view is filtered on year, which is here set at 2022.

ECONOMICS (SUSANNE)

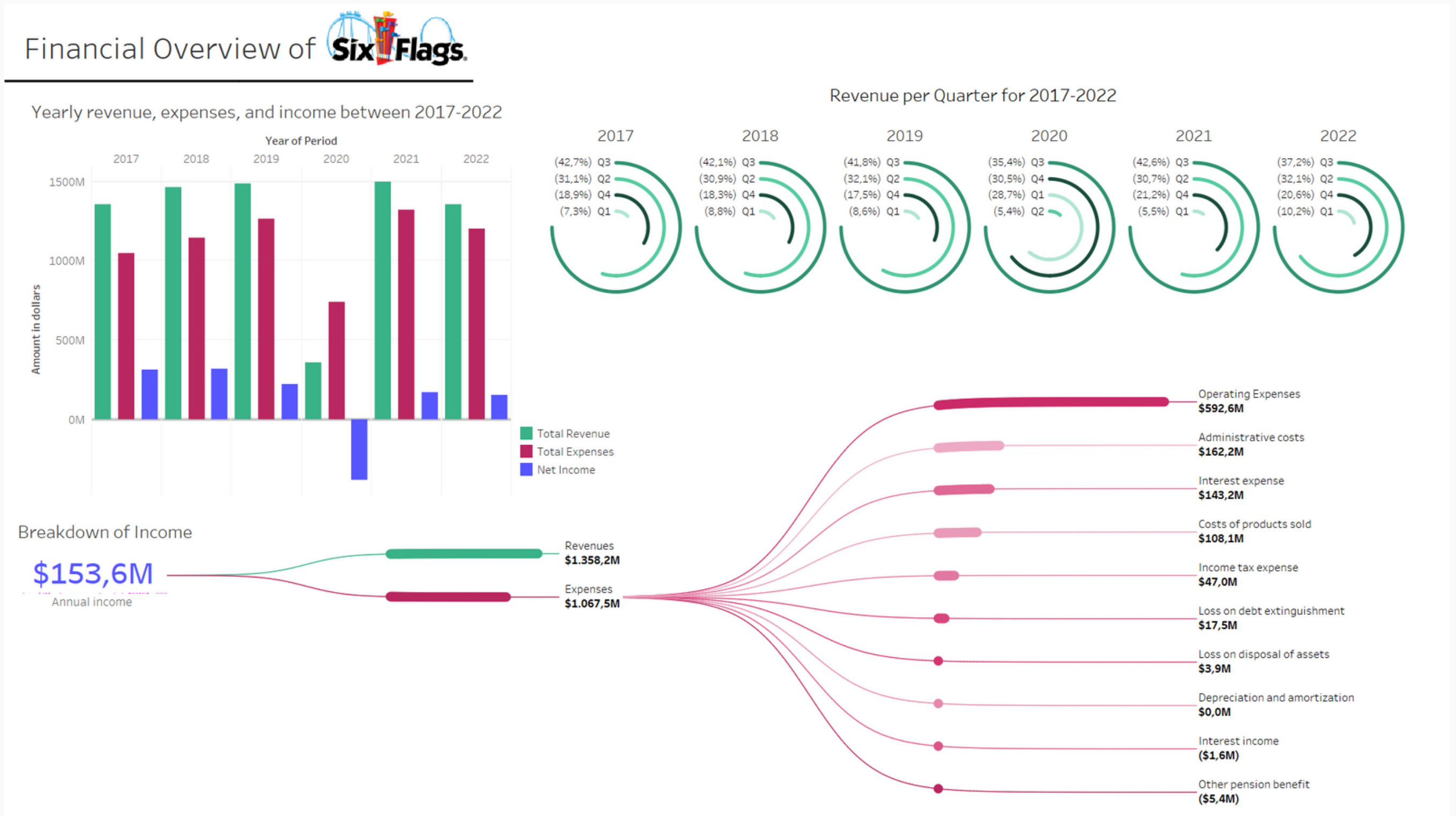
DASHBOARD:



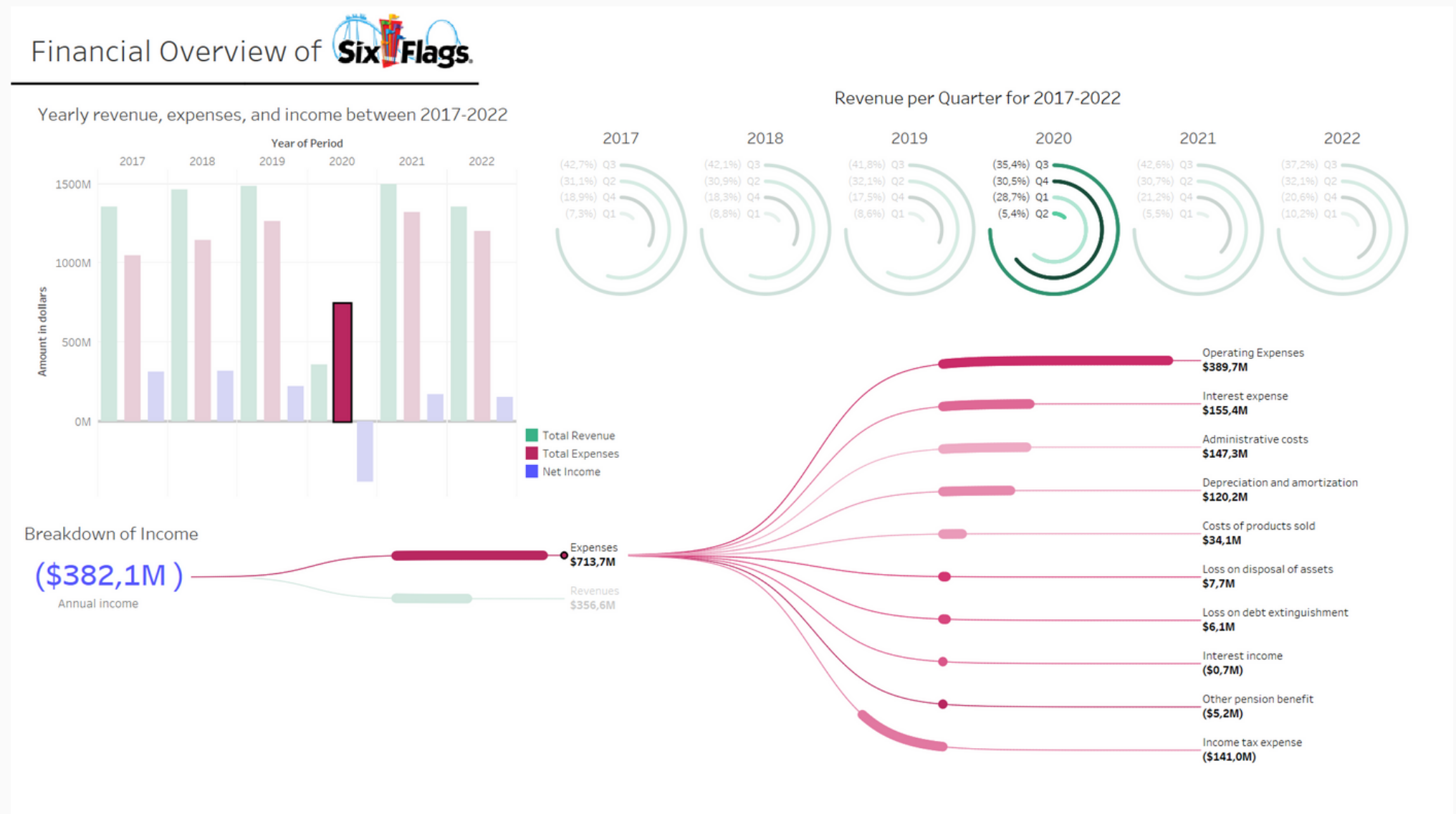
Start and End year can be selected and changed the main graph. The order and sort change the order accordingly.

ECONOMICS (SUSANNE)

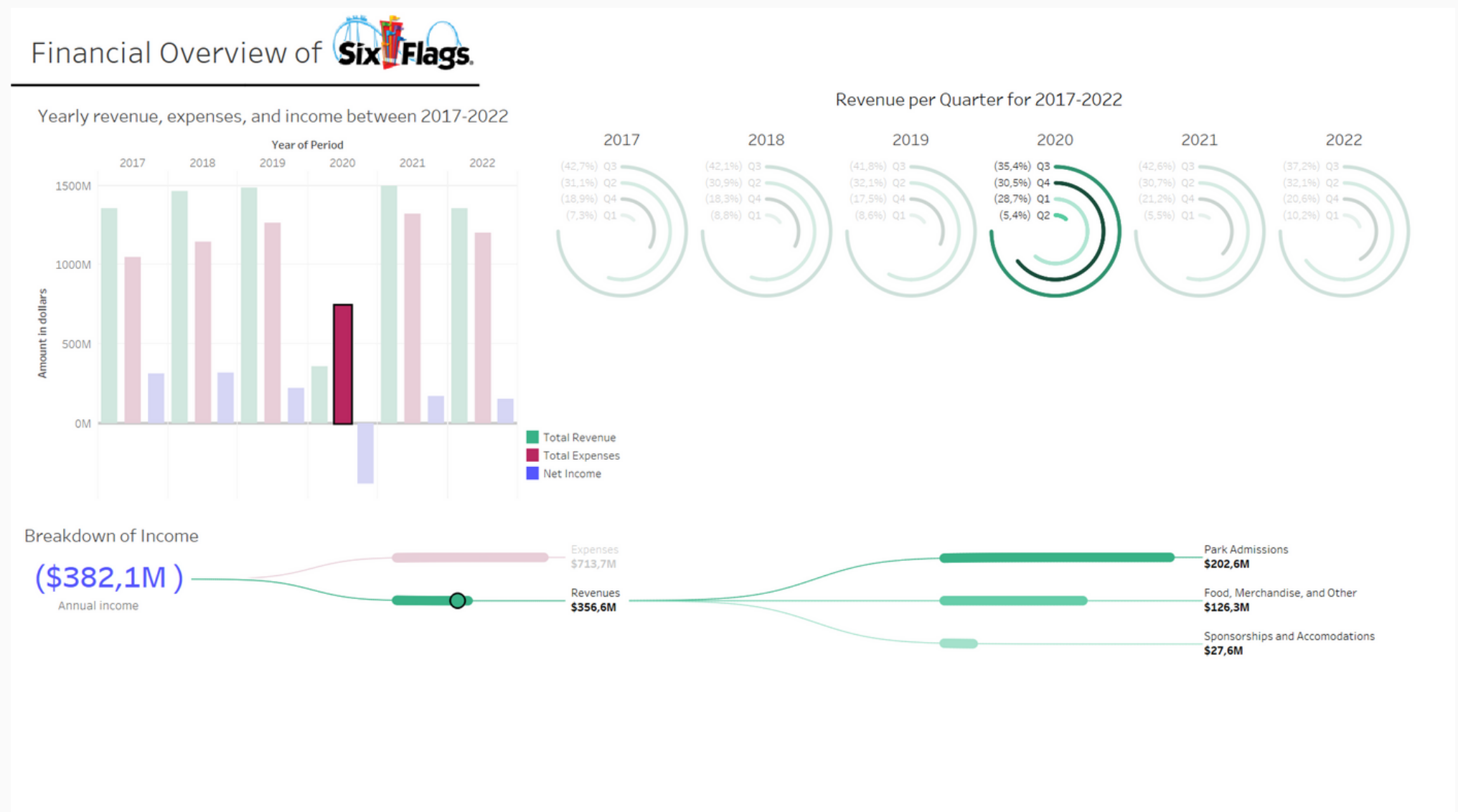
DASHBOARD:



Year highlight and filter on selection in bar graph.



Changing category and subcategory placement on selecting category.



DATASETS

HISTORY

<https://www.kaggle.com/datasets/robikscube/rollercoaster-database>

+ own research about track layouts of different rollercoasters named in the dataset

DEMOGRAPHICS

<https://queue-times.com/parks/6/stats>

<https://www.statista.com/statistics/194247/worldwide-attendance-at-theme-and-amusement-parks/>

+ own data collected from a google forms with 31 entries from CreaTe students

ECONOMICS

<https://www.statista.com/statistics/258810/theme-and-amusement-park-companies-ranked-by-revenue/>

<https://www.statista.com/statistics/427168/revenue-of-six-flags-entertainment/>

<https://investors.sixflags.com/financial-information/annual-reports>

<https://thewaltdisneycompany.com/investor-relations/#reports>

<https://ir.cedarfair.com/overview/default.aspx#annual-reports>

<https://www.cmcsa.com/financials/annual-reports>

<https://www.seaworldinvestors.com/annual-reports/default.aspx>

<https://www.merlinentertainments.biz/investor-relations/results-reports-and-presentations/>

+ own data collected from annual reports from Six Flags, Cedar Fair, SeaWorld, Merlin Entertainments, Universal Studios, and Disney between 2017 and 2022

INJURIES

<https://ridesdatabase.org/saferparks/data/>

ROLLERCOASTERS

Cleaned and modified Data - Steel and wooden Roller Coasters around the world:

<https://www.kaggle.com/datasets/thedevastator/roller-coaster-data-from-around-the-world>

MAGIC KINGDOM

<https://data.world/lynne588/walt-disney-world-ride-data>

<https://cdn.touringplans.com/datasets/entities.csv>

ALL DATASETS

DV - Themeparks

To access the google drive folder, a Utwente Email address needs to be used - if any issues arise, please get in touch with the team leader.